



Information Packet

2022



Sacramento Camp &
Conference Center



In the spirit of Christian hospitality, Sacramento welcomes all who come to our mountaintop setting. We seek to encourage spiritual enrichment by offering each group and individual Christian acceptance, caring service, and opportunities for life transformation.

Sacramento Camp and Conference Center has an established set of biblical core values as based on the Apostles' Creed:

*We believe in God, the Father almighty,
creator of heaven and earth.*

*We believe in Jesus Christ, God's only Son, our Lord,
who was conceived by the Holy Spirit,
born of the Virgin Mary,
suffered under Pontius Pilate,
was crucified, died, and was buried;
he descended to the dead.
On the third day he rose again;
he ascended into heaven,
he is seated at the right hand of the Father,
and he will come to judge the living and the dead.*

*We believe in the Holy Spirit,
the holy catholic (universal) Church,
the communion of saints,
the forgiveness of sins,
the resurrection of the body,
and the life everlasting. Amen.*

These biblically based core values are affirmed in the 2016 Book of Discipline of the United Methodist Church. This Book of Discipline has been agreed upon by our Board of Directors to represent the core values of this camp and conference center ministry as applicable.

**Sacramento Camp & Conference Center is an outreach ministry of
The United Methodist Church.**

About Sacramento

"Come to the Mountain. Let God Refresh Your Soul!"

Thank you for your interest in Sacramento. Enclosed you will find most of the information you need to schedule an event at our Camp and Conference Center. Sacramento is available for groups of all kinds including individuals, families, weddings, reunions, church groups, business retreats, etc. This peaceful and inspirational setting is ideal for workshops and spiritual retreats, whether your groups is large, small, or you come as an individual. Our campus is nestled in the Sacramento Mountains, surrounded by beautiful hills and pine trees. The tranquil setting abounds with mountain wildlife, and has a pleasant climate year-round. At 7,500 feet elevation, Sacramento is a beautiful and comfortable change from desert southwest cities nearby. El Paso is 130 miles away, Las Cruces only 100 miles, and Albuquerque 220 miles. All of West Texas as far east as the Dallas-Fort Worth area can reach our mountains in a day's drive or less!

As you will see in the information provided, we have facilities available for most types of groups. Whether you are planning for a large or small group, we will help you make your stay memorable. You are always welcome to contact our office with any questions you may have. We are happy to help!



How to Book a Group

The following steps may be useful in scheduling your stay at Sacramento.

- Determine the desired dates for your event, with alternative dates if possible.
- Determine your lodging needs, based on group size and lodging preferences.
- Determine your needs for meetings, recreation, and other activities.
- Visit our website at www.sacramentocamp.org to get a feel for what we offer.
- Contact our office to discuss your needs, check availability, and make your reservations: **575-687-3414**
- *Pay a booking fee to hold the selected dates. (\$100 for a group up to 50 people, \$300 for groups of 51-100, \$500 for groups of 100+)
- Sign and return the Group Contract and Hold Harmless Agreement by deadline requested (your event is not officially booked until Sacramento receives these signed documents.)
- **90 days prior to your event, we ask that you pay an additional deposit of 10% of your estimated group invoice. This must be paid 90 days in advance to avoid losing your date to another group.
- 90 days prior to your event give Sacramento your estimated attendance numbers. You will be financially responsible for 75% of your estimated numbers upon final check-out.
- Contact Sacramento regularly as questions arise and your planning proceeds. We can often save you time and energy if you communicate with us by phone or email (info@sacramentocamp.org). We're glad to help. This allows us to prepare in advance which helps you have a successful event!
- The final payment is due upon check-out. **Interest charges will be applied after 10 days.**

*The booking fee is non-refundable; however, if an event is cancelled, the fee may be applied to a future event, if re-scheduled for dates within six months of the original booking.

**The 10% deposit is non-refundable when cancelled within 90 days of event and is non-transferable to any future event.

Both the booking fee and 10% deposit will be applied as payments towards your final invoice.

Lodging

Forrest Lodge

FORREST LODGE is a two-story motel-style facility with private baths and outdoor entrances to each room. There are a total of 24 lodge rooms. 22 of the rooms have two queen beds each. 2 additional rooms have 1 queen bed each and are ADA accessible. In Forrest Lodge, linens and toiletries are provided. The Forrest Lodge lobby, Heritage Hall, may be used for group meetings of up to 30 people. This room is ideal for small group activities and relaxation.



Forrest Lodge Rates

- | | |
|----------------------|-------------------|
| • Single Occupancy | \$87/person/night |
| • Shared Occupancy | \$57/person/night |
| • Toddler (ages 0-4) | Free! |
| • Family Max* | \$155/room/night |

*The Family Max rate applies to families consisting of parents and their *dependent* children.

The increased rates in 2022 are due to rising inflation and an unexpected increase in the price of insurance.

Lodging

Family Life Center

The FAMILY LIFE CENTER is a new two-story facility with outdoor entrances to each room. The bottom floor includes a large meeting room that can be divided into 3 smaller meeting rooms. The second floor has 8 family-friendly, bunk-bed rooms, each with a private bath. Each room has a total of 8 beds: 7 twin and 1 queen. Linens and toiletries are **not** provided in the Family Life Center, but linens can be rented for an additional fee. The Family Life Center Apartment is connected to this building.



Family Life Center Rates

- | | |
|--|--------------------|
| • Single Occupancy | \$102/person/night |
| • Shared Occupancy
(2-4 people in the room) | \$57/person/night |
| • Shared Occupancy
(5+ people in the room) | \$52/person/night |
| • Toddler (ages 0-4) | Free! |
| • Family Max* | \$145/room/night |
| • Optional Linen Service | \$10/bed |

*The Family Max rate applies to families consisting of parents and their *dependent* children.

The increased rates in 2022 are due to rising inflation and an unexpected increase in the price of insurance.

Lodging

Aspen Lodge

ASPEN LODGE is a one-story facility with 14 family-friendly, bunk-bed rooms, each with a private bath (one ADA equipped). Each room has a one full bed and between one and five twin beds. 8 of the rooms have outside entrances off the front and back porches. Linens and toiletries are **not** provided in Aspen Lodge, but linens can be rented for an additional fee. The lobby in Aspen Lodge is a favorite among our guests with plenty of room for meetings or relaxation. Aspen Apartment and Cloudcroft Cabin are connected to this building.



Aspen Lodge Rates

- | | |
|--------------------------|-------------------|
| • Single Occupancy | \$62/person/night |
| • Shared Occupancy | \$47/person/night |
| • Toddler (ages 0-4) | Free! |
| • Family Max* | \$130/room/night |
| • Optional Linen Service | \$10/bed |

*The Family Max rate applies to families consisting of parents and their *dependent* children.

The increased rates in 2022 are due to rising inflation and an unexpected increase in the price of insurance.

Lodging

Dormitories

AYERS DORM is a two-story dormitory with common bathrooms in each hallway. There are 28 dorm rooms and 151 beds. Each room has one full bed and several twin beds. Two of the rooms have full private bathrooms and one room has a private half-bath. Ayers can be divided and secured for co-ed use. Linens and toiletries are not provided. There are lobbies on the first and second floors, a lounge (also known as the Library) on the first floor, and a large balcony on the second floor. These are available for meeting spaces or for relaxing.



LAITY DORM is a two-story dormitory with common bathrooms on each hall. It has a total of 21 dorm rooms and 127 beds. Each room has one full bed and several twin beds. Two of the dorm rooms have private baths. Laity Dorm can be divided and secured for co-ed use. Linens and toiletries are not provided. There is a lobby on the first floor, and a lounge on the second floor. Both rooms are available for meeting spaces or for relaxing.



Dorm Rates

- | | |
|----------------------------|-------------------|
| • Ayers Dorm Individuals | \$42/person/night |
| • Ayers Dorm Family Rate* | \$100/room/night |
| • Laity Dorm Individuals | \$37/person/night |
| • Laity Dorm Family Rate * | \$90/room/night |
| • Optional Linen Service | \$10/bed |

*The Family Max rates apply to families consisting of parents and their *dependent* children.

The increased rates in 2022 are due to rising inflation and an unexpected increase in the price of insurance.

Lodging

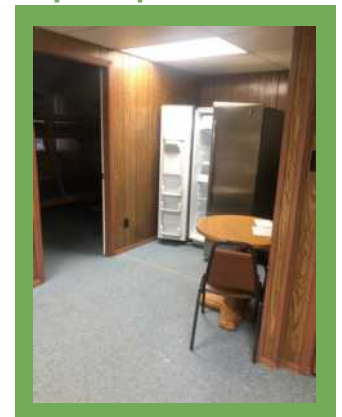
Miscellaneous Lodging

- **CLOUDCROFT CABIN** is an apartment-like facility that is connected to the back of Aspen Lodge. It has both outside and inside entries. This cabin has two bedrooms, one with a queen size bed and another with a twin-over-full bunk. It has two bathrooms (one is ADA equipped), a spacious living room with a full-size sofa sleeper, and a full kitchen with refrigerator, oven and stovetop, and microwave. Linens and toiletries are provided. **Price: \$170/night**
- **ASPEN APARTMENT** is a two bedroom efficiency apartment that is located in Aspen Lodge and has an outside entrance from the front porch. One bedroom has a twin-over-full bunk and the second bedroom has a set of twin bunks. The bathroom is ADA equipped. The kitchenette has a sink, refrigerator, oven and stovetop and microwave. Linens and toiletries are **NOT** provided. **Price: \$95/night**
- **FAMILY LIFE CENTER APARTMENT** is part of the Family Life Center. This apartment has one bedroom with a king-sized bed and a loft with a bunk bed and a full-sized bed. It has one bathroom, a living room, and a kitchen with refrigerator, oven and stovetop, and microwave. Linens and toiletries are provided. **Price: \$185/night**
- **CASA SIERRA** is a cozy little one bedroom cabin located down Point of Silence Road, adjacent to our Lower RV area. It is nicely renovated with a large living room and kitchen, one full bath and an additional half bath and a washer/dryer. This cabin has a queen sized bed and a full size sleeper sofa in the living room. Linens and toiletries are provided. **Price: \$155/night**
- **RV CAMPING** is also available at Sacramento. We have two separate areas for recreational vehicles. There are six sites with full hookups and 30 amp electrical service at the parking lot adjacent to the camp entry (Upper RV). There are seven pull-through sites with full hookups and 50 amp service in a quiet area about a quarter mile from the campus, near our Eagle Challenge Course among beautiful ponderosa pines (Lower RV). 50 amp plug converters are available.

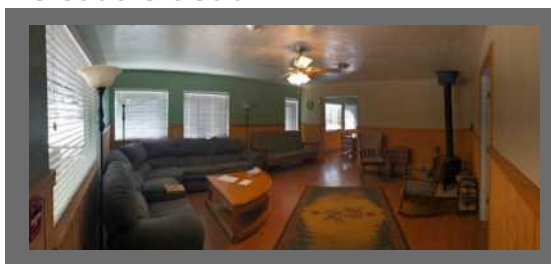
RV Site Prices:

- \$32/night (up to five people)
\$5 for each additional person
Call for long-term rates
- Tent Camping: \$5/person/night

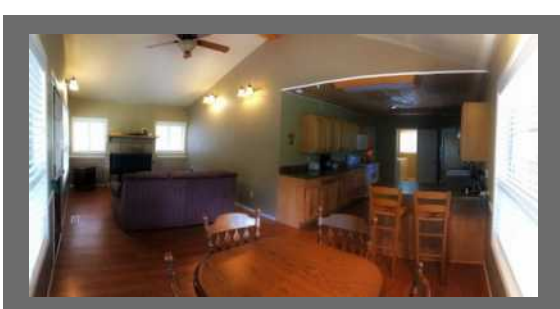
Aspen Apartment



Cloudcroft Cabin



Casa Sierra



Lower RV



FLC Apartment



The increased rates in 2022 are due to rising inflation and an unexpected increase in the price of insurance.

Dining

Nourish Your Soul

Our goal is that you leave Sacramento feeling well fed - in mind, body, and spirit.

Our meals are so good, you may not want to leave. Our chef uses fresh ingredients and exclusive recipes to create tantalizing meal experiences. It's not good camp food. It's good food.

Meal Service can be provided for groups of 10 or more. If your group is smaller, please call to discuss other options, or to reserve one of our facilities that has a private kitchen.



Meal Times

Breakfast	8:00 AM
Lunch	12:00 PM
Supper	5:30 PM

Any changes in these times must be arranged prior to arrival.

We must have an accurate meal count **at least five days** before the arrival of your group to ensure time for ordering food.

Meal Costs

includes entrée, sides, salad, drinks, dessert, tax, tip, etc.

Breakfast	\$12.00
Lunch	\$13.00
Supper	\$14.00

Children 5-12	\$6.50 per meal*
Children 0-4	Free*

**only if* staying in the same room with parents

The increased rates in 2022 are due to rising inflation and an unexpected increase in the price of insurance.



Dining



Beverages

Coffee & Tea

Hot Chocolate & Cider

Juice

Water

Milk (breakfast only)

Menus

Menus are prepared by the Food Service Manager and include a balanced diet for all meals.

Fruit/cereal/yogurt are provided with breakfast and a salad is included with lunch and dinner.

If someone in your group has dietary restrictions, please contact our office so the dining hall can plan accordingly.

Snack Trays

Our incredible dining hall is able to provide more than just 3 meals a day. We would love to provide snacks for your meetings or breaks. Here are some available options:

S'mores

Kettle Corn

Popcorn

Fruit/Veggie Trays

Sandwich Tray

Cookie Tray

Cookie Decorating

Ice Cream Social



This is only some of what we can offer. If you have a specific snack in mind, let us know and we will work to make it happen.

The prices for these snacks are based on current market prices. Please contact our office if you would like the current price for a snack or to schedule a snack for your group!

Meeting Spaces

Between all your eating, worshiping and relaxing at Sacramento, you're likely to want to get together with your group. We've got you covered, large or small. Our versatile and extensive selection of meeting spaces will ensure you'll find exactly what you need for your group meeting. From rustic gazebo settings, to full AV with flat screen TV's or projection, our friendly and knowledgeable staff will take care of everything.

Meeting Spaces are available at no extra charge for groups that are lodging with us. We have meeting spaces that can hold between 10 and 400 people. There are classroom style rooms, a chapel perfect for worship, and lobbies with couches perfect for relaxing. Many of our meeting spaces have a TV and sound system ready for you to use. When you are planning your event, be sure to talk to the office about what meeting space(s) you need for your event.

We are also able to provide many different things for your meeting space at no charge. If you need anything in your meeting space (tables, chairs, extension cords, dry erase boards, etc.) let our office know ahead of time and our staff can have everything in the room before your arrival. If you would like to know if we have something, please do not hesitate to ask!



Recreation

Excite your soul!

Sacramento is packed with adventures to excite you. We offer activities for all ages, including all-terrain vehicles, remote control cars, high and low ropes courses, mountain scooters, and paddle boats.

Our horse program is the best you'll find in New Mexico. With all of these options, the hard part will be narrowing it down. We'll help you create an experience your whole group will remember. Come to the mountain. Let God excite your soul!

Equine

- Trail Rides - \$28 - \$56/person
- Pony Rides - \$5/ride
- Overnight Trail Rides - call for pricing
- Round Pen Seminar - \$75/session
- Introductory Horse Riding Lessons - \$65/person



Relaxing

- Paddle Boats - \$3/boat
- Pedal Karts - \$3/kart
- Catch & Release Fishing - Free (bring your own equipment)
- Roller Skating - \$4/pair
- RC Cars - \$7/person (includes 2 batteries)
- Geo Caching - \$2/GPS Rental



Thrills

- Challenge Course (High Ropes) - \$22 - \$38/person
- Challenge Course (Team Building Low Ropes) - \$22 - \$38/person
- Screaming Eagle (giant swing) - \$7/person
- Zipline - \$7/person
- Indoor Rockwall - \$7/person
- Crate Stacking - \$7/person
- Fling Thing - \$5/person



Adventure

- .22 Cal Long Rifles - \$11/person
- .223 AR-15 Long Rifles - \$28/person
- Archery - \$11/person
- Guided ATV Tours - \$38/single & \$44/double
- Mountain Scooters - \$5/scooter
- Gun Range Rental - \$45/hour
- Trap or Skeet Shooting - \$28/person

Games

- Arrow Tag - \$11/person
- Blacklight Dodgeball - \$50/session
- Laser Tag - \$11/person
- Disc Golf - \$2/disc
- Gaga Ball - Free
- Paintball 2.0 (slingshots) - \$6/person



Snacks & Souvenirs

Located at the Front Porch, our Snack & Gift Shop provides a welcome and relaxing activity for members of your group during program break times. The Front Porch is always open for guests to relax, and the shop is open throughout your stay, based on group program needs and free time. Please make requests for open times prior to your arrival.

The Front Porch



Beverages - soft drinks, juices, bottled water, etc.

Snacks - popcorn, chips, candy, ice cream, etc.

Gifts - t-shirts, hats, Sacramento memorabilia, etc.

Just the Facts

- **Location** - 30 miles southeast of Cloudcroft, NM in the Sacramento Mountains; surrounded by the Lincoln National Forest
- **Elevation** - 7,500 feet
- **Weather** - Cool summer evenings (days rarely above 80), beautiful fall and spring days, colder days in the winter with some snow
- **Lodging & Capacity** - Lodging available for 1-450 persons in dorm and motel-style rooms, RVs and tent camping
- **Meeting Spaces** - Rooms of different styles to accommodate groups from 10 to 300 and are complimentary when lodging with us. For day-use meeting room rental, please contact the office.

FAQs

- What if I arrive after the office has closed?
The office is open most days from 8:30 - 12:00 and 1:00 - 5:00. If you arrive outside of our normal office hours, you can go straight to your assigned room. It should be unlocked and ready for you. If you are unsure where you are staying, go by Skipper's Hall and check the room assignments that are listed on the TV in the lobby. If you need any assistance, use the yellow callbox on the outside of Skipper's Hall. There is always someone on site ready to help!
- What is included in the linen rental?
The linen rental includes sheets, blankets, pillows, and towels
- Can I bring my own ATV?
Guests are welcome to bring their own ATV to Sacramento, but our insurance does not allow guests to ride their personal ATVs on our trails. You can drive them on the roads to transport yourself and other guests and you can bring them off-site as long as you follow any applicable rules.
- What if I want a key to my room?
We are keyless for the most part and rarely have any issues. However, we understand that some people have important items that they want to ensure are locked in their room. If you would like a key to your room, let the office know and they will give you one.
- Do I have to be a Methodist to visit the camp?
No! We invite everyone to come enjoy our mountaintop setting.
- Are pets allowed?
Pets are allowed on a limited basis and only in certain facilities. If you would like to bring your pet, please make arrangements through our office ahead of time.
- Can my vehicle make it to the camp?
Any size vehicle can make it to Sacramento. You do not have to go on any unpaved roads to get here.
- When will the gift shop be open?
The gift shop is scheduled upon request by group leaders. If it is not open at a time that works for you, please have your group leader come by the office so we can schedule it for another time.
- What if I forget to bring something?
If you forget something that you need for your stay, please stop by the office. We keep basic toiletries in stock and want to make sure you have what you need.
- Can I rent a Golf Cart to drive around camp?
We rent out our golf carts to groups or individuals that need them to get around. Please call our office to reserve them in advance if possible.
- Are campfires allowed?
If you would like to have a campfire while you are here, you can reserve one of our fire pits (as long as there is no burn ban in effect). There is no charge for this service and we provide the fire wood!
- What if I want to schedule an activity once I am at the camp?
We strongly encourage you to schedule activities prior to your arrival as it is not always possible to schedule something at the last minute. If you are interested in scheduling something after you arrive, have your group leader come by the office and we will see what we can do.
- Are meals included with the lodging rates?
No. Meal and lodging rates are separate.
- Is there a large group discount?
No. Our prices do not fluctuate based on the number of people you bring.

Directory of Services

Emergency Information

- Fire or Medical Emergency - Call 911
- Services provided by Sacramento-Weed Volunteer Fire & Rescue
- Medical care provided by Presbyterian Medical Services in Cloudcroft and General Champion Regional Medical Center in Alamogordo
- Notify Sacramento management of emergency as soon as possible. Callboxes for emergency use are located at Skipper's Hall, the Dining Hall, the Family Life Center, Aspen Lodge, Laity Dorm, and Lower RV

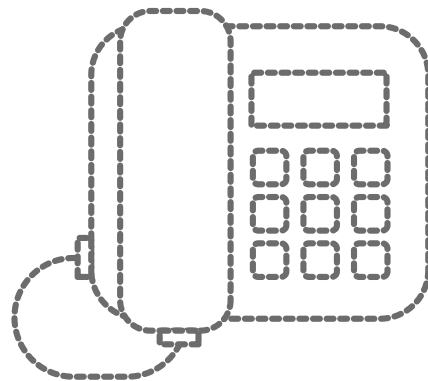


24-Hour Assistance - Skipper's Hall

- Office hours are every day 8:30-12:00 and 1:00-5:00
- Call box is located on wall outside main office for after-hours assistance.
- Internet is available throughout camp -- it is most reliable at Skipper's Hall, the Dining Hall, the Front Porch, and the Family Life Center

Office Services

- Copies
 - Black & White copies - 10 cents/page
 - Color copies - 20 cents/page
- Office supplies - charged according to use
- Golf Cart Rental - \$25/day



Communication

- Postal Services
 - Mail drop & postage available in office
 - Mail goes out at 10:30 AM
- Cellular Service
 - Limited Verizon signal available at the office
 - Other on-site cell service not guaranteed
- WiFi (free) is available on site. Login information is posted throughout camp.

Rules for a Successful Event

1. Our number one requirement is that your event be a wonderful success filled with fun and overflowing with blessings!
2. Remember that Check-in time is 4:00 pm and Check-out time is 11:00 am for lodging unless other arrangements are made with the Sacramento office.
3. In order for all of our guests to have a great time, we ask that you observe a quiet time beginning every night at 11:00 pm.
4. Groups are asked to keep the grounds and buildings clean while here and to leave the facilities as you found them.
5. PLEASE! NO alcohol, illegal drugs, or fireworks are permitted anywhere on the campus.
6. PLEASE! NO firearms allowed unless for use at Sacramento's gun range with NRA certified staff facilitation. All firearms must be kept locked in a secure location AT ALL TIMES. Contact office for additional information.
7. Smoking is NOT permitted in the buildings or the forest area. If one must smoke, please do so out of view of children and youth and on the porches of the buildings where ash receptacles are provided. Your courtesy in regard to other guests is greatly appreciated.
8. Campfires & grills may be lit in designated area (except when prohibited by weather conditions). Please check with the office or the manager on duty before starting a fire anywhere.
9. All fires in fireplaces, stoves, or outdoor fire pits are NEVER to be left unattended. A person from your group needs to be present until the fire is OUT.
10. Please do not stack wood next to the fireplaces or stoves; and do not leave matches or fire starters unattended.
11. Please leave your vehicles parked while on campus, unless needed to transport someone with physical difficulties.
12. Please do not wade or play in the pond (unless it is part of a programming event organized by Sacramento), or throw rocks or other objects into the pond. The ducks and fish are pets - please be kind to them.
13. Rock throwing is not permitted anywhere on camp grounds.
14. Pets are allowed on a limited basis. We have no kennel facilities. Please call ahead if you must bring your pet so that arrangements can be made.
15. Please enjoy our many hiking trails. Trail maps are available at the office. Some of these trails are quite steep, rugged and uneven. Always be aware of possible loose rocks and other natural dangers. Stay on trails and avoid off trail hiking. Trail conditions off of our property are unknown and may not be clearly marked. We have wonderful neighbors, so we ask that you please stay off their private property.
16. PLEASE! DO report all injuries/illnesses to the main office or the manager on duty. An emergency call box is provided for your use to contact staff members. The boxes are located at Skipper's Hall, Forrest Lodge, Family Life Center, Dining Hall, Aspen Lodge and Laity Dorm.

***Rules for acceptance and participation in any program of Sacramento are the same for everyone
– without regard to sex, race, color, national origin, age, ancestry or physical disability.***

Directions to Sacramento

From Albuquerque

Take I25 south toward Socorro.

Take exit 139 and turn east only Hwy 380 toward Carrizozo.

Go approximately 65 miles.

Turn south onto Hwy 54 toward Alamogordo.

Go approximately 54 miles.

At the intersection of Hwy 54/70 and Hwy 82, turn left onto Hwy 82, heading toward Cloudcroft.

*Continue using directions from Alamogordo (see below)

From El Paso/Alamogordo

Take 54 north from El Paso to Alamogordo.

Take the by-pass road around Alamogordo.

At the end of the by-pass you will be at the intersection of Hwy 54/70 and Hwy 82

Go straight through the stop light onto Hwy 82 east toward Cloudcroft.

*Go 16 miles to Cloudcroft.

Go through Cloudcroft on Hwy 82 heading toward Mayhill.

Around the 35-36 mile marker, turn right onto NM 130 (only option).

Go 5 miles on 130 and turn left onto NM 24 (only option).

Take NM 24 about 5 miles to Agua Chiquita Canyon Road (old NM 521).

Do NOT turn onto Lumin Rd., as some GPS systems will advise

Turn right onto Agua Chiquita Canyon Rd. (only option) and go 5 miles to Sacramento.

The sign to "Sacramento Camp & Conference Center" is well marked.

Turn left; go across the bridge and cattle guard.

At the fork in the road, take the right branch and go up the mountain.

We are located at the end of the road.

From Lubbock/Artesia

Take Hwy 82 west heading toward Mayhill and Cloudcroft.

Just past the town of Mayhill, about the 35-36 mile marker, turn left onto NM 130 (only option).

Go 5 miles on 130 and turn left onto NM 24 (only option).

Take NM 24 about 5 miles to Agua Chiquita Canyon Road (old NM 521).

Do NOT turn onto Lumin Rd., as some GPS systems will advise

Turn right onto Agua Chiquita Canyon Rd. (only option) and go 5 miles to Sacramento.

The sign to "Sacramento Camp & Conference Center" is well marked.

Turn left; go across the bridge and cattle guard.

At the fork in the road, take the right branch and go up the mountain.

We are located at the end of the road.

Directional Map



*"Come to the Mountain.
Let God Refresh Your Soul!"*



Please contact us to schedule
your event! 575.687.3414

Molly Williams

Guest Relations Manager

Molly@SacramentoCamp.org

Casey Grambusch

Guest Services Coordinator

Casey@SacramentoCamp.org